



PUTTERILLS

EST. 1992

43 Lemsford Village, Lemsford, Welwyn Garden City, Hertfordshire, AL8
Guide Price: £1,175,000

Exquisite four-bedroom detached residence nestled within a picturesque Hertfordshire village

Welcome to Lemsford Village, Welwyn Garden City, where charm, convenience, and tranquillity unite. Nestled in this idyllic location is a stunning 4 bedroom detached residence that presents an exceptional opportunity for families seeking a new forever home. Offering plentiful living space, ample natural light, and superior finishes throughout, this property encompasses the very essence of comfortable luxury. Upon entering, the warm and inviting ambiance greets you, setting the tone for the rest of this exceptional dwelling. The ground floor boasts three impressive reception rooms, ideal for entertaining guests or creating separate spaces for relaxation, work, and play. The modern and sleek open plan kitchen, fitted with top-of-the-range appliances and bi-folding doors, is perfect for the culinary enthusiast in the family. With an abundance of storage options and ample counter space, preparing meals becomes a joyous experience.

The first floor comprises four generously sized bedrooms, each providing a peaceful haven after a long day. The master suite exudes opulence, offering a private sanctuary for unwinding, with views overlooking Hertfordshire countryside and the luxury of an ensuite bathroom, complete with elegant fixtures. The two additional bathrooms ensure convenience and privacy for the whole family.

The exterior of the property is equally impressive. A well-maintained garden surrounds the house, providing a tranquil escape from the outside world. Enjoy lazy Sunday afternoons with family and friends, hosting barbecues or simply basking in the sunshine. At the forefront of the residence lies an enclosed driveway, complete with electric gates, offering abundant parking space for multiple vehicles.

This house in Lemsford Village, Welwyn Garden City, epitomizes elegance, style, and comfort.





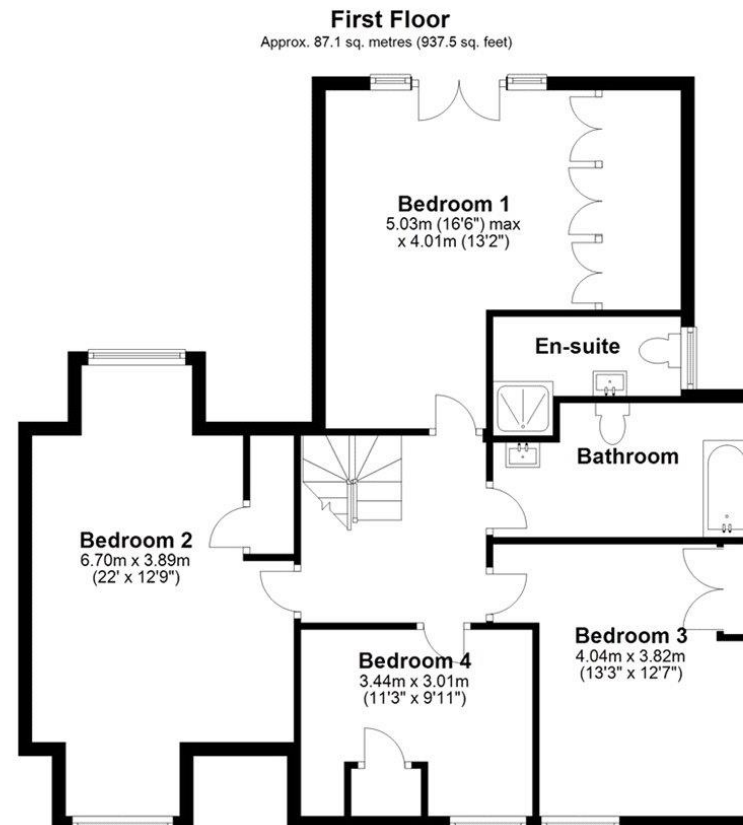
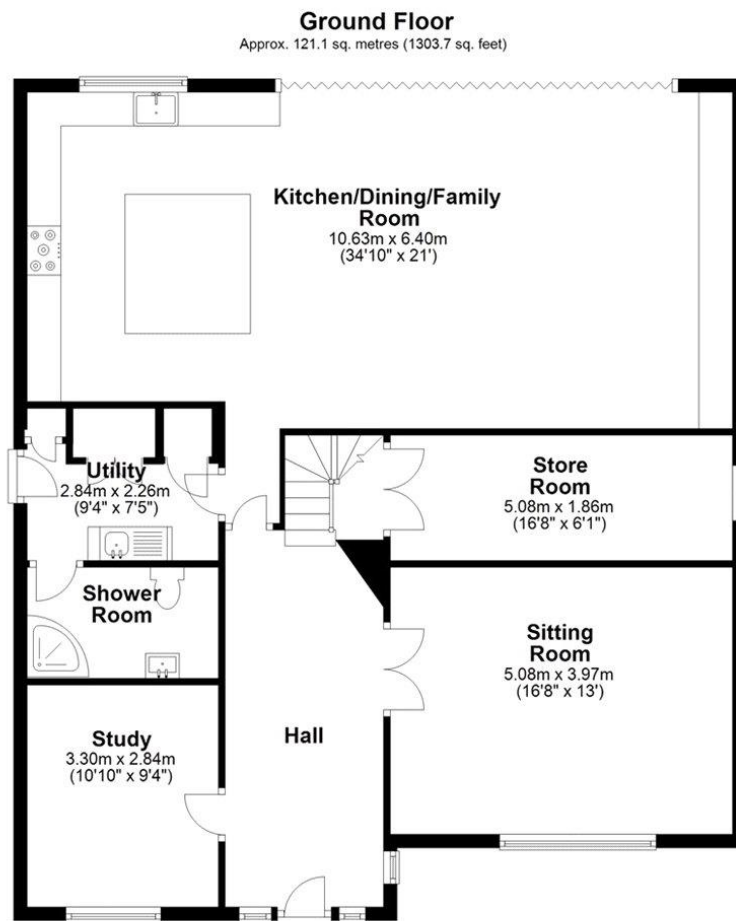












Total area: approx. 208.2 sq. metres (2241.2 sq. feet)